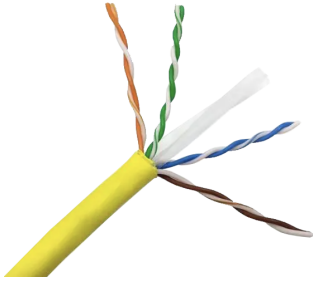


ASKA COMMUNICATION CORP.

3034 NW 82ND AVE. DORAL, MIAMI, FL 33122



UTP CAT6 UNSHIELD UL LISTED CMR/FT 4

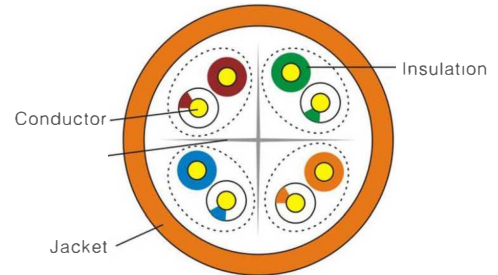
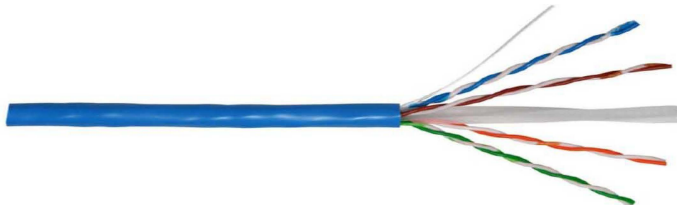


Electrical Characteristics

- Impedance: 1-250MHz 100 ± 15 (Ohms).
- Rated Temperature: 75 °C
- DC Resistance unbalance(%): max 2.5
- DC Resistance 20 °C : 8.4 (Ohms/100m)
- Pair-to-Ground Capacitance Unbalance: 330 (pF/100m)
- Installation Resistance: $>5000\text{M}\Omega \cdot \text{Km}$
- Dielectric strength: DC 2500V 2S.

Application

- Meets or exceeds requirements of ANSI/TIA-568-C.2 Category 6 and ISO 11801 2nd Edition Class E channel standards.
- Meets or exceeds requirements of ANSI/TIA-568-C.2 and IEC 6116-5 Category 6 component standards.
- Meets requirements of IEEE 802.3af and IEEE 802.3at for POE applications.
- Third party tested to comply with ANSI/TIA/EIA-568-C.2.
- Descending length cable markings enable easy identification of remaining cable which reduces installation time and cable scrap.
- Color Availability: Additional cable colors available.



CAT6 UTP Lan Cable

Conductor

Conductor Solid Bare Copper 23AWG
Insulation HDPE

Total number of insulated conductors 8, twisted in 4 pairs

Color code White-Blue/Blue, White-Orange/Orange, White-Green/Green, White-Brown/Brown

Individual pair shield None

Overall shield None

Drain wire None

Nominal Transmission Characteristics

Frequency (MHz)	RL (min) (dB)	IL (max) (dB/100m)	DOP (max) (ns/100m)	Delay Skew (max) (ns/100m)	Next (min) (dB)	PSNEXT (min) (dB)	ACR-F (min) (dB/100m)	PSACR-F (min) (dB/100m)
1	20.0	2	570	45	74	72	67.8	64.8
4	23.0	3.8	552	45	65	63	55.7	52.7
10	25.0	6.0	545	45	59	57	47.8	44.8
16	25.0	7.6	543	45	56	54	43.7	40.7
20	25.0	8.5	542	45	55	53	41.7	38.7
31.25	23.6	10.7	540	45	52	50	37.9	34.9
62.5	21.5	15.4	538	45	47	45	31.8	28.8
100	20.1	19.8	537	45	44.3	42.3	27.8	24.8
200	18.0	29.0	536	45	39.7	37.7	21.7	18.7
250	17.3	32.8	535	45	38	36	19.8	16.8

Note: The above transmission performance for the 100M, $20 \pm 2^\circ\text{C}$ under the conditions tested.